

**Why You Should Read This:** The document below reviews the environmental impact likely from a project. This project is planned to be federally funded through your tax dollars; therefore, you are entitled to take part in its review. If you have concerns about the environmental impact of this project, raise them now. We encourage public input in this decision making process.



## **IOWA STATE REVOLVING FUND**

### **CATEGORICAL EXCLUSION**

February 7, 2012

**To: All Interested Citizens, Government Agencies, and Public Groups**

An environmental review has been performed based on the procedures for implementing the National Environmental Policy Act (NEPA), for the proposed agency action below:

**Applicant:** City of Monmouth

**SRF Number:** CS1920639 01

**IDNR Project Number:** S2012-0136

**County:** Jackson

**State:** Iowa

The City of Monmouth, Iowa is planning an upgrade to their wastewater collection system. The proposed project includes rehabilitation of existing sanitary sewers. The city has applied for financial assistance through the State Revolving Fund (SRF) loan program to build the project.

The project area is currently the existing collection system on city owned property, easement areas, and road rights-of-way. The proposed project includes cured-in-place pipe (CIPP) lining of existing sanitary sewer segments, manhole chimney sealing, epoxy manhole lining and sealing, manhole reconstructions, and reinstatement and sealing of laterals.

The proposed project was reviewed for eligibility for a categorical exclusion from NEPA review specified in the 40 CFR (Code of Federal Regulations) Part 6.204. The project meets all criteria described in the above reference and was determined that this project is eligible for a categorical exclusion. Consequently, a preliminary decision has been made that a Finding of No Significant Impact (FNSI) will not be prepared.

Justification for granting categorical exclusion:

- The project as proposed is solely directed toward minor upgrading or minor expansion of system capacity, rehabilitation of the existing system and system components, or construction of new minor ancillary facilities adjacent to or on the same property as existing facilities.
- This project will not involve new or relocated discharges to surface or ground water.
- This project will not result in substantial increase in the volume or the loading of pollutant to the receiving water.
- The project will not serve a population 30% greater than the existing population.
- The project is not directly or indirectly involved or related to upgrading or extending infrastructure systems primarily for the purposes of future development.
- The project is not counter to the state, or other regional growth plan or strategy.
- The proposed action is not known or expected to have potentially significant environmental impacts on the quality of the human environment either individually or cumulatively over time.
- The proposed action is not known or expected to have disproportionately high and adverse human health or environmental effects on any community, including minority communities, low-income communities, or federally-recognized Indian tribal communities.
- The proposed action is not known or expected to significantly affect federally listed threatened or endangered species or their critical habitat.
- The proposed action is not known or expected to significantly affect national natural landmarks or any property with nationally significant historic, architectural, prehistoric, archeological, or cultural value, including but not limited to, property listed on or eligible for the National Register of Historic Places.
- The proposed action is not known or expected to significantly affect environmentally important natural resource areas such as wetlands, floodplains, significant agricultural lands, aquifer recharge zones, coastal zones, barrier islands, wild and scenic rivers, and significant fish or wildlife habitat.
- The proposed action is not known or expected to cause significant adverse air quality effects.
- The proposed action is not known or expected to have a significant effect on the pattern and type of land use (industrial, commercial, agricultural, recreational, residential) or growth and distribution of population including altering the character of existing

residential areas, or may not be consistent with state or local government, or federally-recognized Indian tribe approved land use plans or federal land management plans.

- The proposed action is not known or expected to cause significant public controversy about a potential environmental impact of the proposed action.
- The proposed action is not known or expected to be associated with providing financial assistance to a federal agency through an interagency agreement for a project that is known or expected to have potentially significant environmental impacts.
- The proposed action is not known or expected to conflict with federal, state or local government, or federally-recognized Indian tribe environmental, resource-protection, or land-use laws or regulations.

The Department of Natural Resources shall revoke the categorical exclusion and shall require a full environmental review if, subsequent to the granting of an exclusion, the state determines that:

- The proposed project no longer meets the requirements for a categorical exclusion due to changes in the proposed project; or
- New evidence reveals that serious local or environmental issues exist; or
- Federal, State, local or tribal laws are being violated.

This action is taken on the basis of a careful review of supporting information that is on file at the Department of Natural Resources' Des Moines, Iowa office. This information is available upon request. This Department will not take any administrative action on the project for at least thirty (30) calendar days from the above date. Persons disagreeing with the above environmental decision may submit comments to the Department during this period. Please direct your comments to me at [Tiffany.Wilson@dnr.iowa.gov](mailto:Tiffany.Wilson@dnr.iowa.gov) or (515) 725-0261.

Sincerely,



Tiffany Wilson  
Environmental Review Specialist

401 SW 7<sup>th</sup> Street, Suite M  
Des Moines, IA, 50309-4611

Enclosure: Project Map

Cc: Mike Finkenbinder, MSA Professional Services, Inc. 1605 Associates Dr., Suite 102,  
Dubuque, IA 52002

Distribution List (email): Horst Greczmiel, Council on Environmental Quality  
Dean Lemke, Iowa Department of Agriculture and Land Stewardship  
Ken Sharp, Iowa Department of Public Health

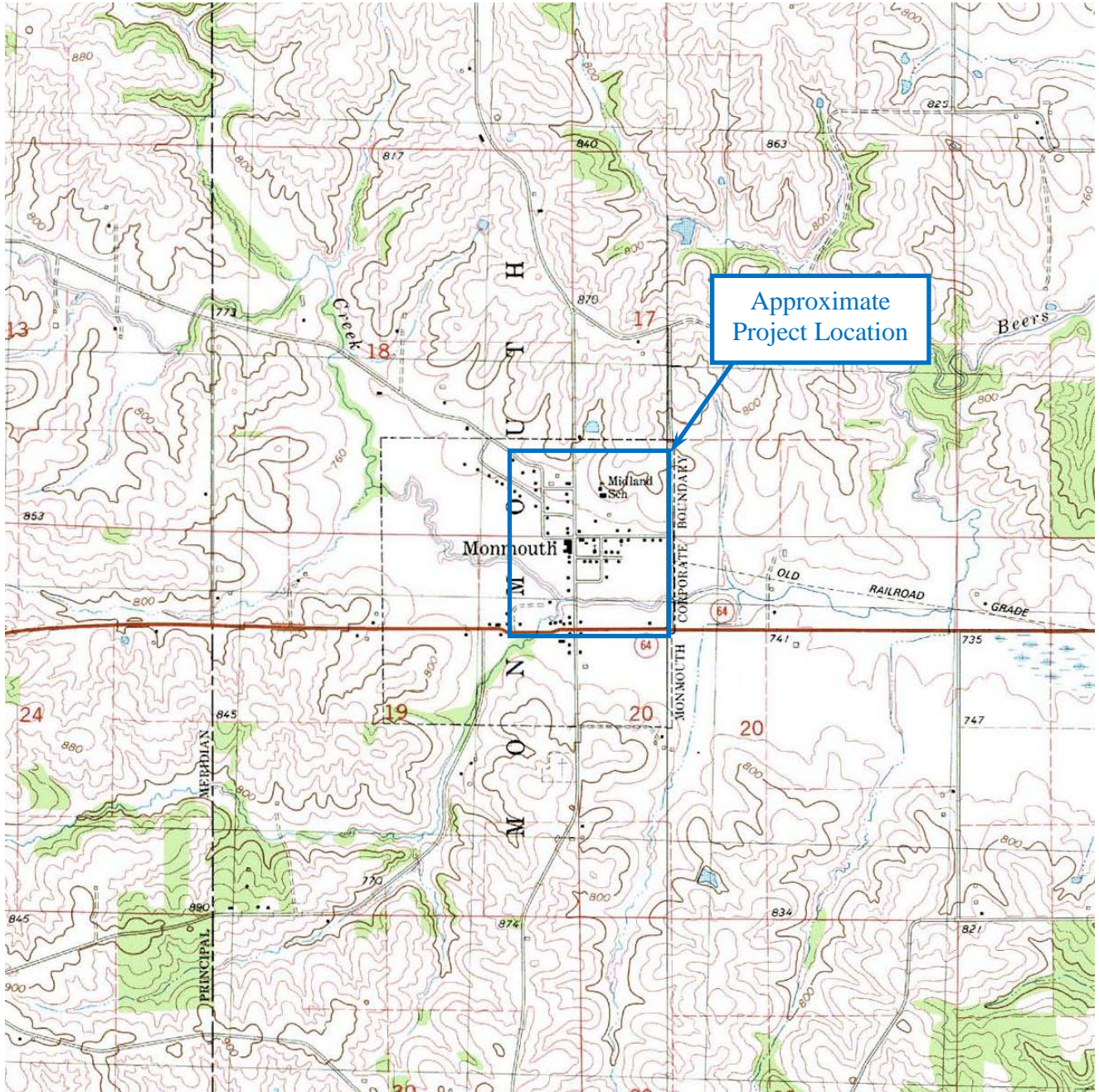
Distribution List (cont):

- Benton Quade, Iowa Economic Development Authority
- Annie Beaman, Iowa Environmental Council
- Susan Heathcote, Iowa Environmental Council
- Tracy Scebold, Iowa Finance Authority
- Mickey Shields, Iowa League of Cities
- Jane Clark, Sierra Club
- Donna Jones, USACE Rock Island District
- Jim Carroll, USDA Rural Development
- Nick Chevance, USDOJ, National Park Service, Midwest Region
- USDOJ, Fish and Wildlife Service, Rock Island Field Office
- Christopher Simmons, USEPA Region VII
- Joe Cothorn, USEPA Region VII
- Maquoketa Sentinel-Press

**USGS 7.5 Minute Quadrangle: Wyoming East**  
**Sections: 17, 18, 19 & 20 Township: 84 N, Range: 01 E**  
**Date: 1980**  
**Scale: 1 Inch = 2,000 Feet**



**North**



## USGS Topographic Map

Monmouth Collection System Improvements  
Monmouth, Iowa



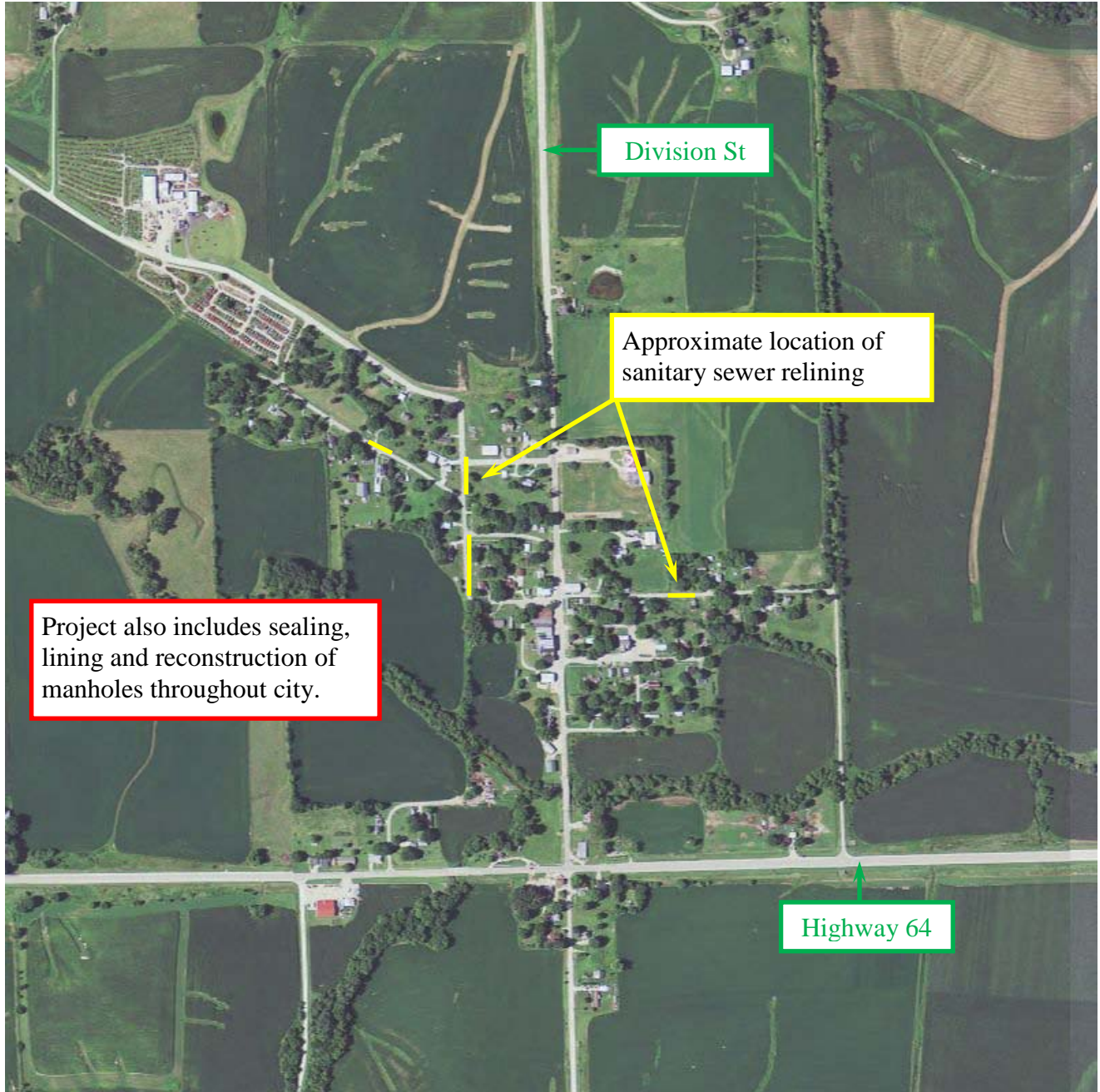
State Revolving Fund  
401 SW 7<sup>th</sup> Street, Suite M  
Des Moines, IA 50309

2011

Location provided by MSA Professional Services.



North

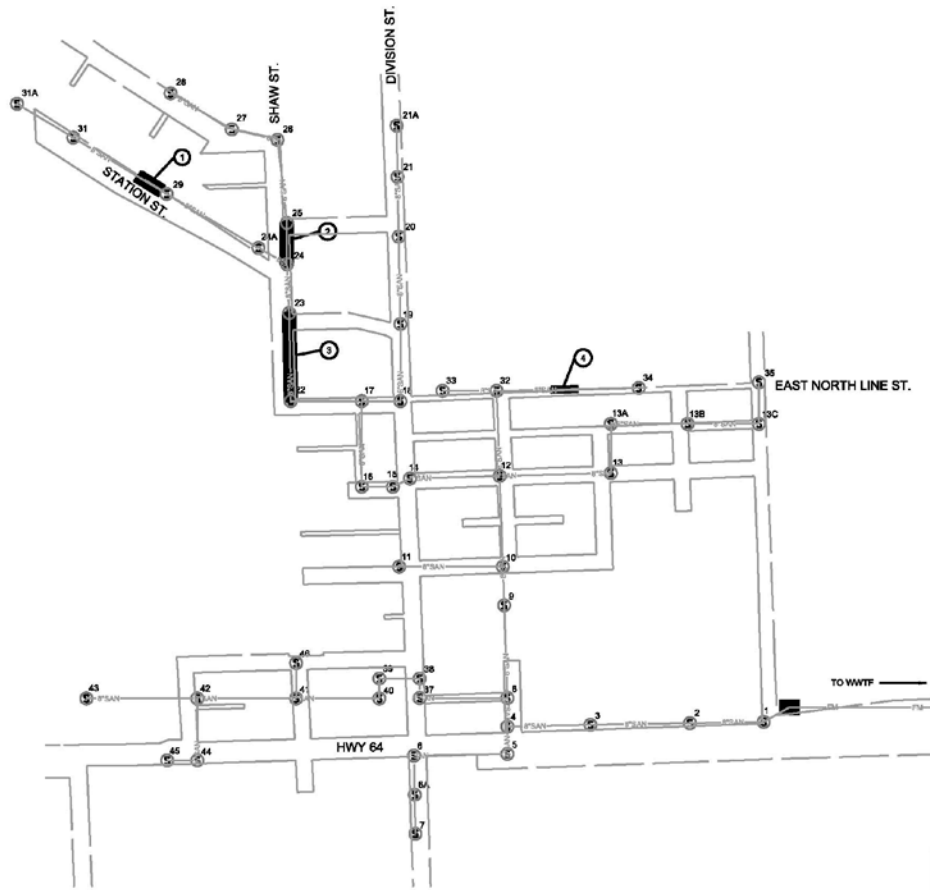


## Aerial Photograph (2011)

Monmouth Collection System Improvements  
Monmouth, Iowa



State Revolving Fund  
401 SW 7<sup>th</sup> Street, Suite M  
Des Moines, IA 50309



- NOTES:
- SEWER LINING SHALL CONSIST OF CURED-IN-PLACE PIPE IN ACCORDANCE WITH SPECIFICATION SECTION 33 01 30.72.
  - GROUT SEAL LATERAL CONNECTIONS, EACH.
  - ALL MEASUREMENTS ARE APPROXIMATE. CONTRACTOR IS RESPONSIBLE FOR OBTAINING ACTUAL LINING QUANTITIES.

LEGEND

- EXISTING FORCEMAIN
- EXISTING 8" SANITARY SEWER
- EXISTING MANHOLE WITH MANHOLE NUMBER
- EXISTING PUMP STATION
- PIPE SECTION NUMBER
- PIPE LOCATION TO BE LINED

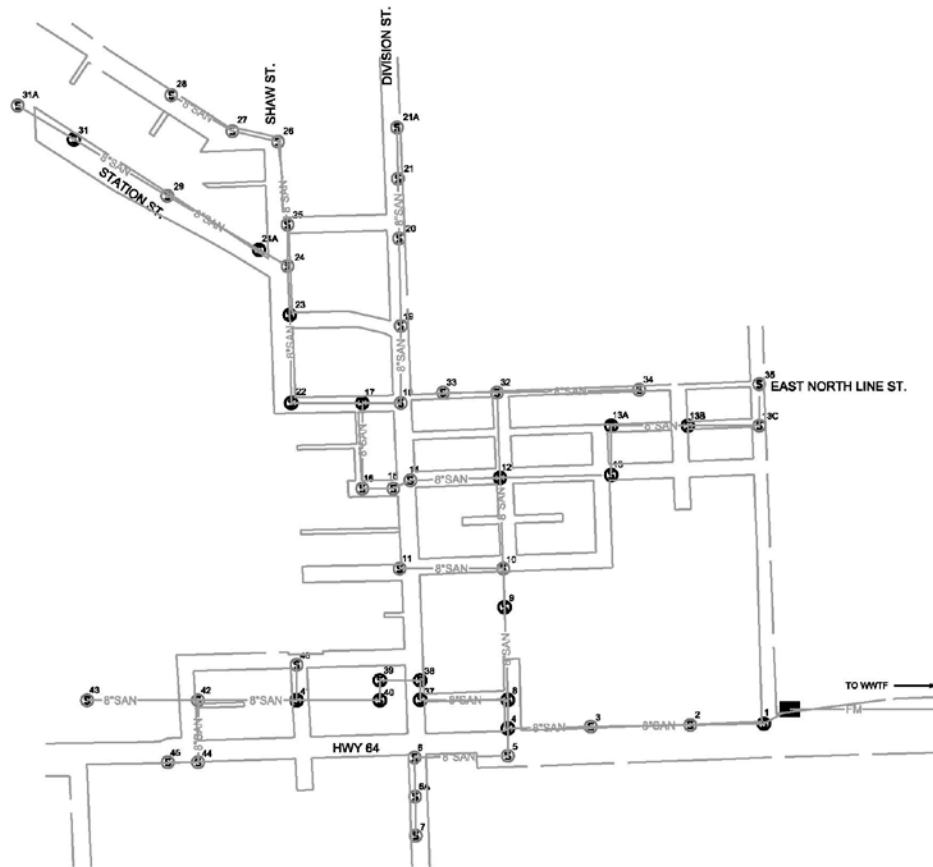
PIPE QUANTITIES										
SECTION	LENGTH	DIA	MATERIAL	NO. (M) (M)	NO. (M) (M)	NO. (M) (M)	NO. (M) (M)	NO. (M) (M)	NO. (M) (M)	NO. (M) (M)
1	100	12"	CPVC	8	SECRET USER	SECRET USER	SECRET USER	SECRET USER	SECRET USER	SECRET USER
2	100	12"	CPVC	8	SECRET USER	SECRET USER	SECRET USER	SECRET USER	SECRET USER	SECRET USER
3	100	12"	CPVC	8	SECRET USER	SECRET USER	SECRET USER	SECRET USER	SECRET USER	SECRET USER
4	100	12"	CPVC	8	SECRET USER	SECRET USER	SECRET USER	SECRET USER	SECRET USER	SECRET USER
5	100	12"	CPVC	8	SECRET USER	SECRET USER	SECRET USER	SECRET USER	SECRET USER	SECRET USER
TOTAL	500	12"	CPVC	40	SECRET USER	SECRET USER	SECRET USER	SECRET USER	SECRET USER	SECRET USER

PROJECT NO. 150000	SCALE: AS SHOWN	DATE: 11/02/02	DRAWN BY: JMM	CHECKED BY: JMM	APPROVED BY: JMM	Preliminary	 <b>TRANSPORTATION • MUNICIPAL DEVELOPMENT • ENVIRONMENTAL</b> <small>1805 Excelsior Drive, Dubuque, IA 52002          562-442-5075 • 1-800-395-5214 Fax: 562-442-4322          1805 Excelsior Drive, Dubuque, IA 52002</small>	SANITARY SEWER LINING MAP	<b>MONMOUTH I&amp;I REDUCTION DESIGN</b> CITY OF MONMOUTH MONMOUTH, IA	DRAWN: 11/02/02 SHEET: 002
--------------------	-----------------	----------------	---------------	-----------------	------------------	-------------	---	---------------------------	--	-------------------------------

## Site Sketch (Sewer Relining)

Monmouth Collection System Improvements  
 Monmouth, Iowa

State Revolving Fund  
 401 SW 7<sup>th</sup> Street, Suite M  
 Des Moines, IA 50309-4611



MANHOLE NO.		TYPE	MANHOLE QUANTITIES
1	2	PREPAST	NEW BASE (EPOXY LINE WITH LOCATED IN URB)
3	4	PREPAST	EPOXY LINE MANHOLE INTERIOR
5	6	PREPAST	NEW MANHOLE WITH
7	8	PREPAST	EPOXY LINE MANHOLE INTERIOR
9	10	PREPAST	EPOXY LINE MANHOLE INTERIOR
11	12	PREPAST	EPOXY LINE MANHOLE INTERIOR
13	14	PREPAST	EPOXY LINE MANHOLE INTERIOR
15	16	PREPAST	EPOXY LINE MANHOLE INTERIOR
17	18	PREPAST	EPOXY LINE MANHOLE INTERIOR
19	20	PREPAST	EPOXY LINE MANHOLE INTERIOR
21	22	PREPAST	EPOXY LINE MANHOLE INTERIOR
23	24	PREPAST	EPOXY LINE MANHOLE INTERIOR
25	26	PREPAST	EPOXY LINE MANHOLE INTERIOR
27	28	PREPAST	EPOXY LINE MANHOLE INTERIOR
29	30	PREPAST	EPOXY LINE MANHOLE INTERIOR
31	32	PREPAST	EPOXY LINE MANHOLE INTERIOR
33	34	PREPAST	EPOXY LINE MANHOLE INTERIOR
35	36	PREPAST	EPOXY LINE MANHOLE INTERIOR
37	38	PREPAST	EPOXY LINE MANHOLE INTERIOR
39	40	PREPAST	EPOXY LINE MANHOLE INTERIOR
41	42	PREPAST	EPOXY LINE MANHOLE INTERIOR
43	44	PREPAST	EPOXY LINE MANHOLE INTERIOR
45	46	PREPAST	EPOXY LINE MANHOLE INTERIOR
TOTAL			220

- NOTES:
- MANHOLE LINING SHALL CONSIST OF:
    - EPOXY SEALING IN ACCORDANCE WITH SPECIFICATION SECTION 33 01 30.79
  - ALL MEASUREMENTS ARE APPROXIMATE. CONTRACTOR IS RESPONSIBLE FOR OBTAINING ACTUAL LINING QUANTITIES.

LEGEND

	EXISTING FORCEMAIN
SANITARY SEWER	EXISTING 8\"/> SANITARY SEWER
	EXISTING MANHOLE WITH MANHOLE NUMBER
	EXISTING PUMP STATION

PREPARED BY: MSA CHECKED BY: MSA DATE: 11/06/2022	Preliminary	 <b>MSA</b> <small>CONSTRUCTION SERVICES</small>	TRANSPORTATION • MUNICIPAL DEVELOPMENT • ENVIRONMENTAL 1875 Junction Drive, Des Moines, IA 50319 562-842-5073 • 562-842-5214 • Fax: 562-842-4252 Web: www.msa-engineers.com	<b>MANHOLE REHABILITATION MAP</b>	<b>MONMOUTH I&amp;I REDUCTION DESIGN</b> CITY OF MONMOUTH MONMOUTH, IA	DRAWN: 11/06/2022 R01
---	-------------	--	---	-----------------------------------	--	-----------------------------

## Site Sketch (Manhole Improvements)

Monmouth Collection System Improvements  
 Monmouth, Iowa

State Revolving Fund  
 401 SW 7<sup>th</sup> Street, Suite M  
 Des Moines, IA 50309-4611