

**Why You Should Read This:** The document below reviews the environmental impact likely from a project. This project is planned to be federally funded through your tax dollars; therefore, you are entitled to take part in its review. If you have concerns about the environmental impact of this project, raise them now. We encourage public input in this decision making process.



## **IOWA STATE REVOLVING FUND**

### **REAFFIRMATION OF A FINDING OF NO SIGNIFICANT IMPACT**

February 8, 2012

**To: All Interested Citizens, Government Agencies, and Public Groups**

An environmental review has been performed based on the procedures for implementing the National Environmental Policy Act (NEPA), for the proposed agency action below:

**Applicant:** City of Earling

**SRF Number:** CS1920584 01

**IDNR Project Number:** S2010-0187

**County:** Shelby

**State:** Iowa

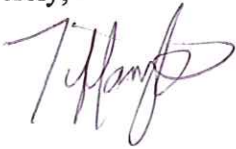
The purpose of this letter is to provide you with a State Revolving Fund (SRF) status update. This project has previously been reviewed by the DNR and a Finding of No Significant Impact (FNSI) was issued on March 2, 2011. This FNSI is hereby Reaffirmed including the revised location for the proposed wastewater treatment lagoon expansion. The revised project area includes additional land that will be used for new wastewater treatment infrastructure as well as a temporary construction easement area.

A petition had been made by the City of Earling to revise this project scope to include the above listed work as a continuation of the ongoing construction project. The scope addition had not been previously evaluated by the DNR. It has now been determined by the DNR, and the State Historical Preservation Office has concurred (R&C # 110183011), that the additional work will result in "No Historic Properties Affected." Given the scope and location of the proposed additional work, no other impacts of the environmental criteria listed in 40 CFR Part 6 are anticipated.

This action is taken on the basis of a careful review of the engineering report, the environmental assessment and other supporting data which are on file at the Department of Natural Resources' office in Des Moines, Iowa. These are available for public review upon request. This Department

will not take any administrative action on the project for at least thirty (30) calendar days from the above date. Persons disagreeing with the above environmental decision may submit comments to the department during this period. Please direct your comments to me at [Tiffany.Wilson@dnr.iowa.gov](mailto:Tiffany.Wilson@dnr.iowa.gov) or 515-725-0261.

Sincerely,



Tiffany Wilson  
Environmental Specialist  
401 SW 7<sup>th</sup>, Suite M  
Des Moines, IA 50309

Enclosure: Project Map

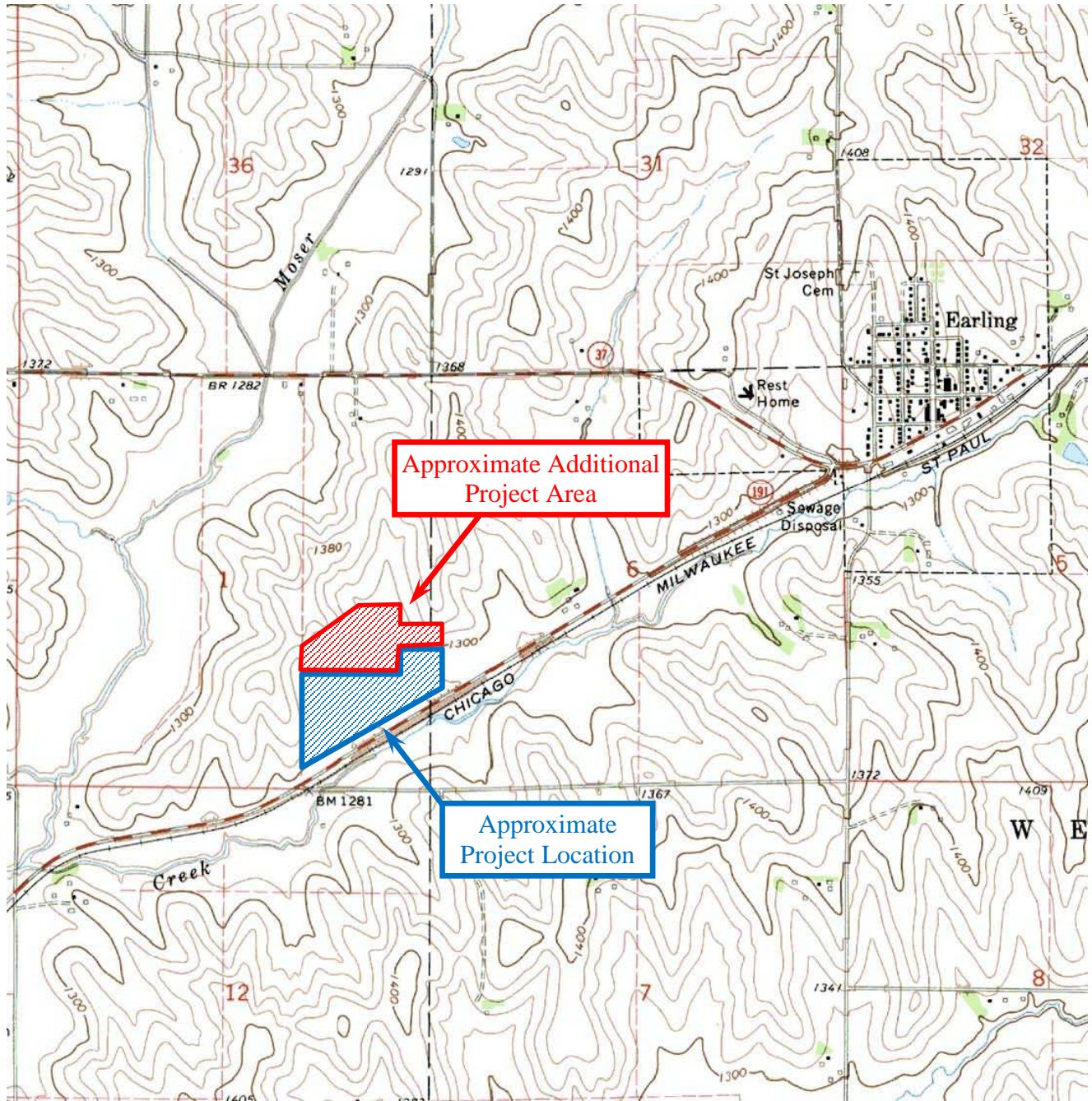
Cc: David Carroll, MSA Professional Services, Inc., 1555 SE Delaware Ave # F,  
Ankeny, IA 50021-4011

Distribution List (email): Horst Greczmiel, Council on Environmental Quality  
Dean Lemke, Iowa Department of Agriculture and Land Stewardship  
Ken Sharp, Iowa Department of Public Health  
Benton Quade, Iowa Economic Development Authority  
Annie Beaman, Iowa Environmental Council  
Susan Heathcote, Iowa Environmental Council  
Tracy Scebold, Iowa Finance Authority  
Mickey Shields, Iowa League of Cities  
Jane Clark, Sierra Club  
Donna Jones, USACE Rock Island District  
Jim Carroll, USDA Rural Development  
Nick Chevance, USDO, National Park Service, Midwest Region  
USDO, Fish and Wildlife Service, Rock Island Field Office  
Christopher Simmons, USEPA Region VII  
Joe Cothorn, USEPA Region VII  
Kelly Beard-Tittone, USEPA Region VII  
The Harlan Tribune

USGS 7.5 Minute Quadrangle: Earling  
Section: 01, Township: 80 N, Range: 40 W &  
Section: 06, Township: 80 N, Range: 39 W  
Date: 1971  
Scale: 1 Inch = 2,000 Feet



North



## USGS Topographic Map

Earling Wastewater Treatment Plant Expansion – **REVISED 10/2011**  
Earling, Iowa



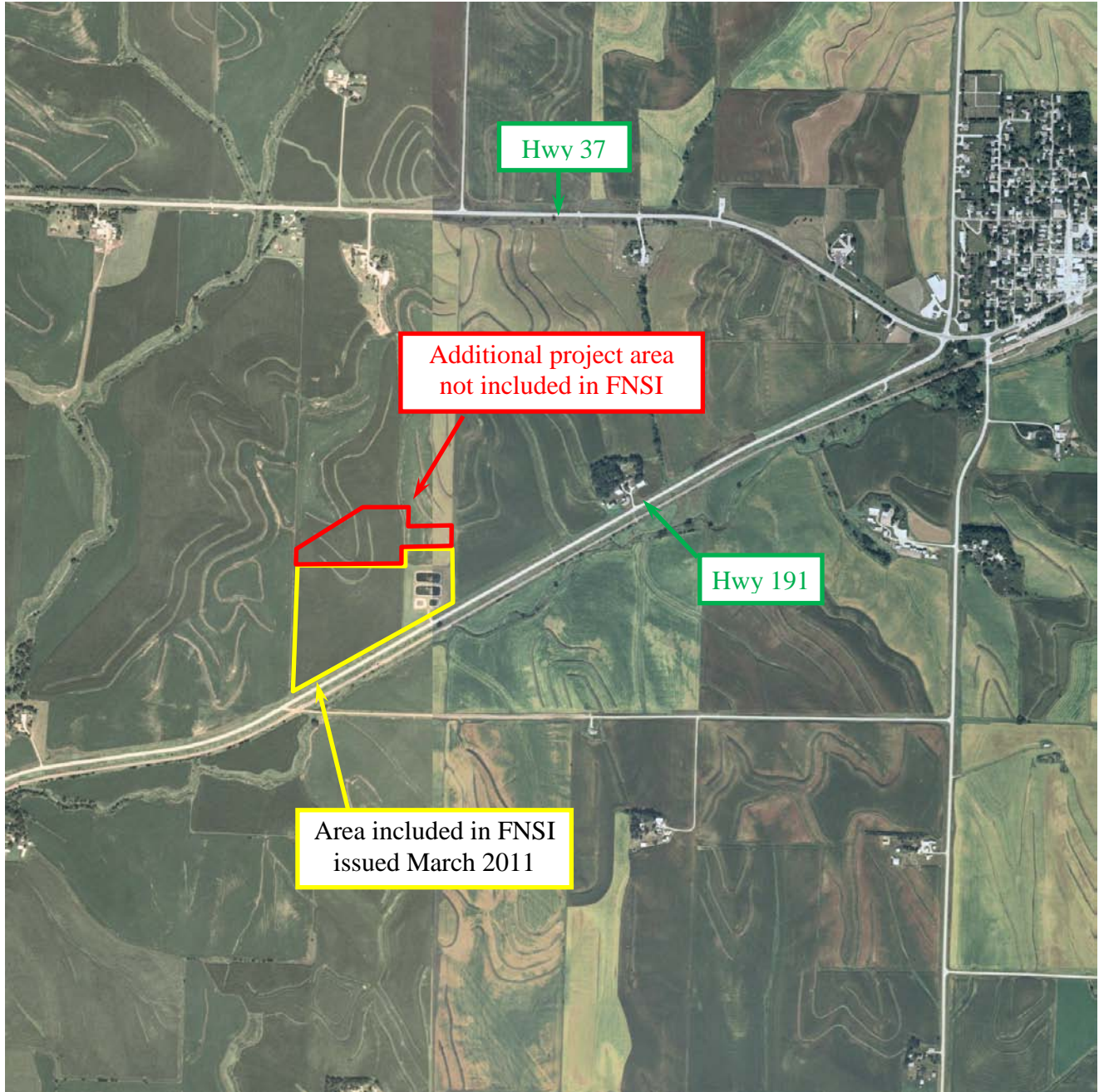
State Revolving Fund  
401 SW 7<sup>th</sup> Street, Suite M  
Des Moines, IA 50309

2011

Location provided by MSA Professional Services



North

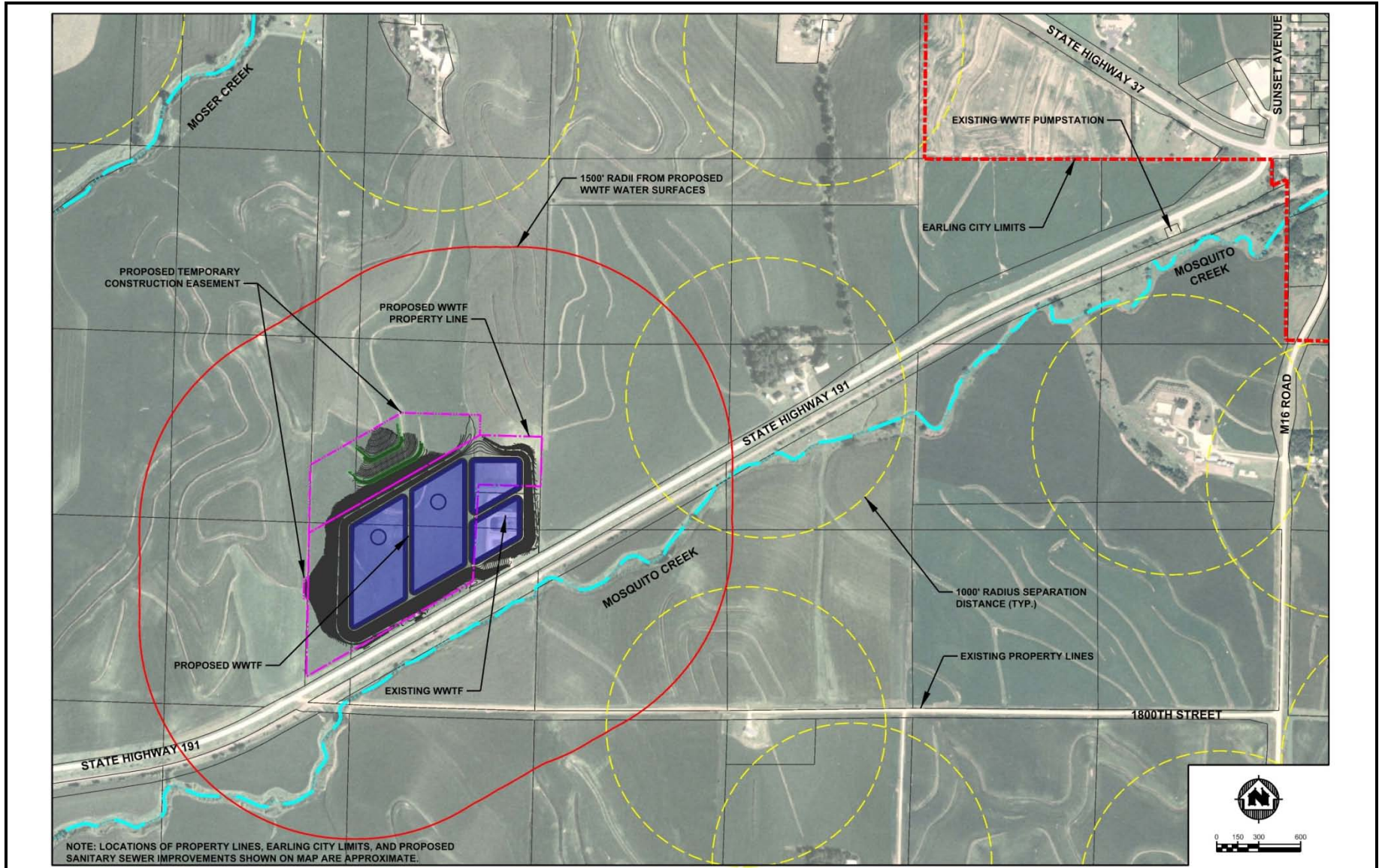


## Aerial Photograph

Earling Wastewater Treatment Plant Expansion – **REVISED 10/2011**  
Earling, Iowa



State Revolving Fund  
401 SW 7<sup>th</sup> Street, Suite M  
Des Moines, IA 50309



## Site Sketch - Provided By MSA Professional Services

Earling Wastewater Treatment Plant Expansion – **REVISED 10/2011**  
 Earling, Iowa



State Revolving Fund  
 401 SW 7<sup>th</sup> Street, Suite M  
 Des Moines, IA 50309-4611