

Why You Should Read This: The document below reviews the environmental impact likely from a project. This project is planned to be federally funded through your tax dollars; therefore, you are entitled to take part in its review. If you have concerns about the environmental impact of this project, raise them now. We encourage public input in this decision making process.



IOWA STATE REVOLVING FUND

REAFFIRMATION OF A CATEGORICAL EXCLUSION

February 22, 2012

To: All Interested Citizens, Government Agencies, and Public Groups

An environmental review has been performed based on the procedures for implementing the National Environmental Policy Act (NEPA), for the proposed agency action below:

Applicant: City of Corydon

Project No.: CS1920487 01

County: Wayne

State: Iowa

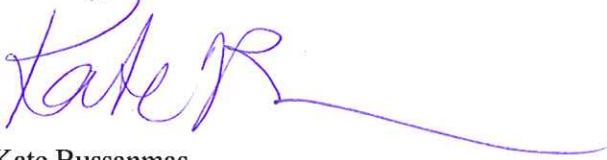
The purpose of this letter is to provide you with a State Revolving Fund (SRF) status update. This project has previously been reviewed by the DNR and a Categorical Exclusion (CX) was issued on March 22, 2011. This CX is hereby reaffirmed including:

- The removal and direct replacement of portions of the existing sanitary sewer between Highway 2 and W. South Street. Other portions of this pipe will be lined. Manholes along the pipe will be upgraded.
- The lining of approximately 1,100 linear feet of existing sanitary sewer along W. South Street. Manholes will be added along this pipe.
- The installation of approximately 620 feet of 12-inch pipe along State Street. All work will take place within previously disturbed right-of-way.

A petition had been made by the City of Corydon by way of a change order as of January 18, 2012 to revise this project scope to include the above listed work as a continuation of the ongoing construction project. The scope addition had not been previously evaluated by the DNR. It has now been determined by the DNR, and the State Historical Preservation Office has concurred (R&C #091093016) the scope and location of the proposed additional work, no other impacts of the environmental criteria listed in 40 CFR Part 6 are anticipated.

This action is taken on the basis of a careful review of the engineering report, the environmental assessment and other supporting data which are on file at the Department of Natural Resources' office in Des Moines, Iowa. These are available for public review upon request. This Department will not take any administrative action on the project for at least thirty (30) calendar days from the above date. Persons disagreeing with the above environmental decision may submit comments to the department during this period. Please direct your comments to me at kate.bussanmas@dnr.iowa.gov or 515-725-0992.

Sincerely,



Kate Bussanmas
Environmental Specialist
401 SW 7th, Suite M
Des Moines, IA 50309

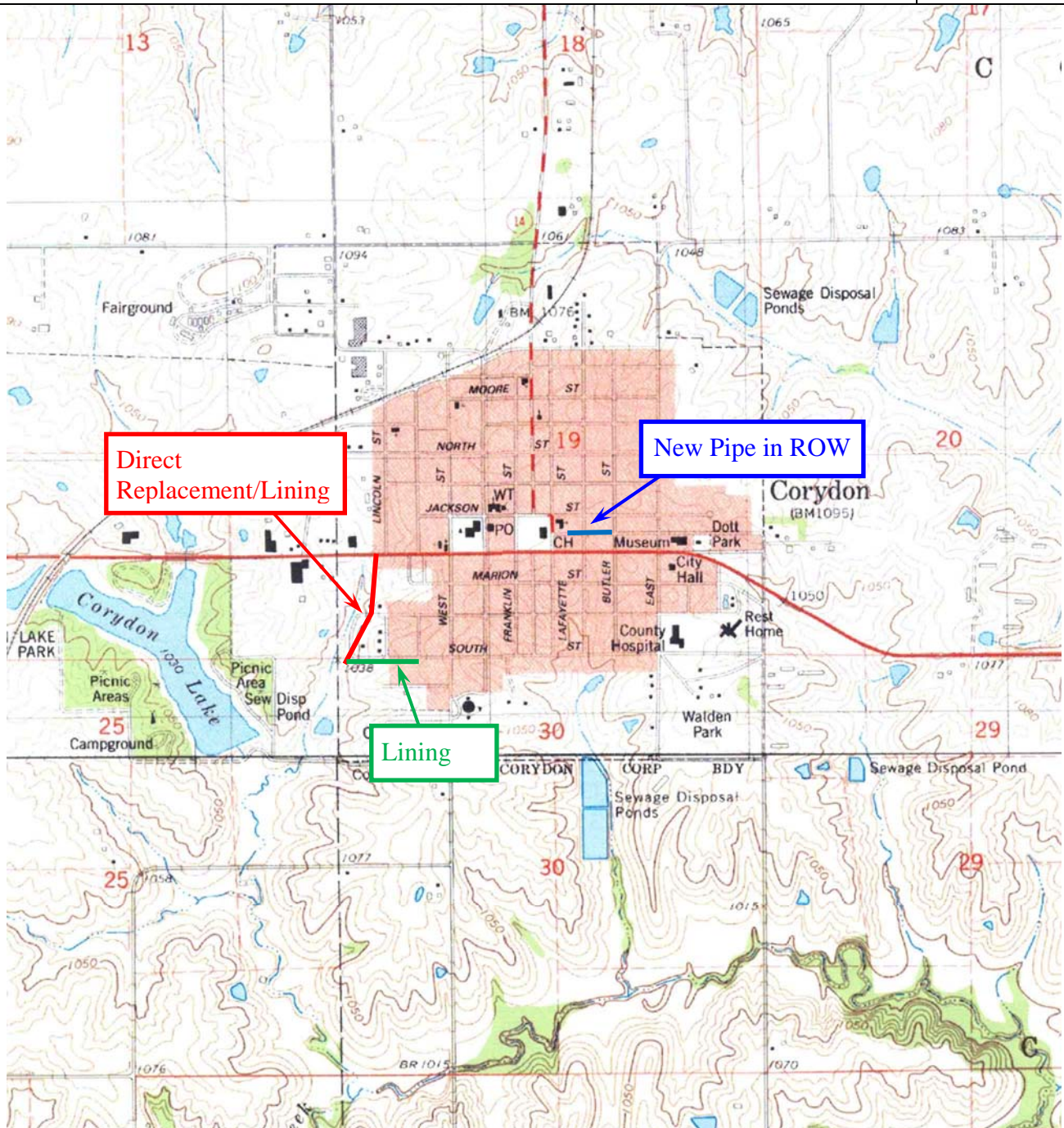
Enclosure: Project Map

Distribution List (email): Sarah Campbell, MSA Professional Services
Corydon Times-Republican
Horst Greczmiel, Council on Environmental Quality
Dean Lemke, Iowa Department of Agriculture and Land Stewardship
Ken Sharp, Iowa Department of Public Health
Benton Quade, Iowa Economic Development Authority
Annie Beaman, Iowa Environmental Council
Susan Heathcote, Iowa Environmental Council
Tracy Scebold, Iowa Finance Authority
Mickey Shields, Iowa League of Cities
Jane Clark, Sierra Club
Donna Jones, USACE Rock Island District
Jim Carroll, USDA Rural Development
Nick Chevance, USDO, National Park Service, Midwest Region
USDO, Fish and Wildlife Service, Rock Island Field Office
Christopher Simmons, USEPA Region VII
Joe Cothorn, USEPA Region VII
Kelly Beard-Tittone, USEPA Region VII

Corydon Quadrangle
Section: 19 and 30, Township: 69 N, Range: 21 W
Date: 1982
Scale: 1 Inch = 2,000 Feet



North



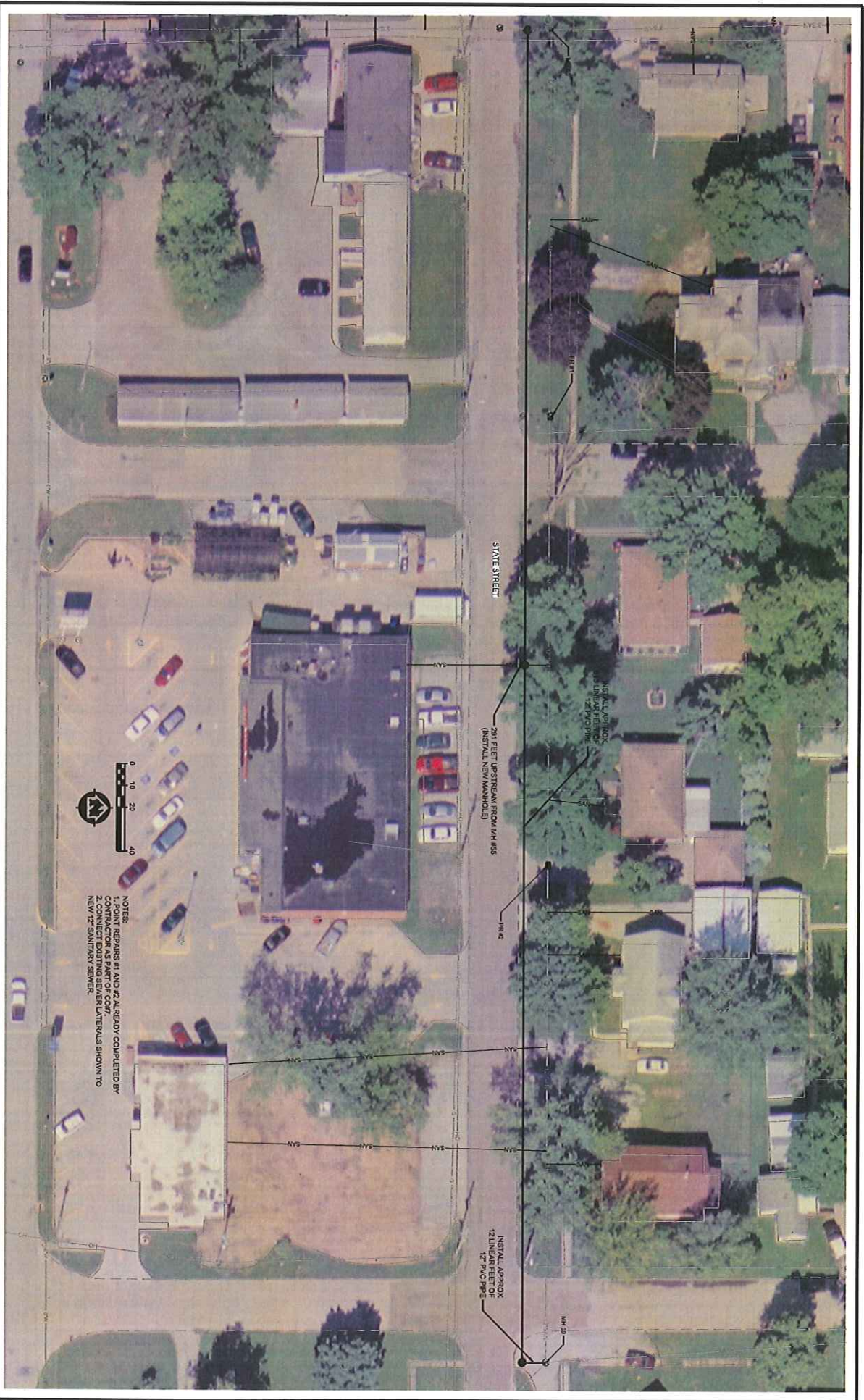
USGS Topographic Map

Corydon Sanitary Sewer and Lift Station Upgrade
Corydon, Iowa



State Revolving Fund
401 SW 7th Street, Suite M
Des Moines, IA 50309

PROJECT NO. 2008000	SHEET NO. 001	DATE 08/20/08	SCALE 1"=40'
PROJECT DATE 08/01/08	DESIGN BY BSC	NO. 1011	
OWNER BY 208			
DATE 08/01/08			
COMMUNITY			
MSA			
MANAGEMENT & MAINTENANCE 1505 St. Charles Ave., Ste. 1000 Metairie, LA 70001 (504) 885-1100 www.msa.com			
Change Order #8 (Option #2)		Corydon Sanitary Sewer Rehabilitation	
		City of Corydon Corydon, IA	
		443305	



NOTES:
 1. POINT REPAIRS #1 AND #2 ALREADY COMPLETED BY
 2. CONNECT EXISTING ADVERSE LATERALS SHOWN TO
 NEW 12" SANITARY SEWER.